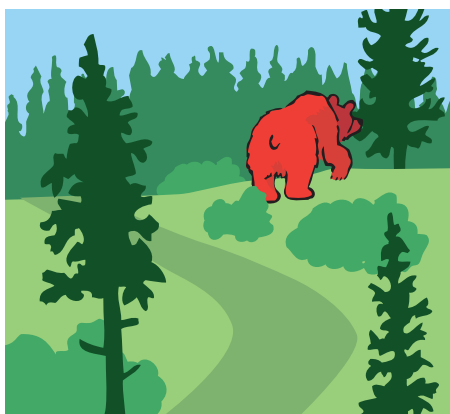
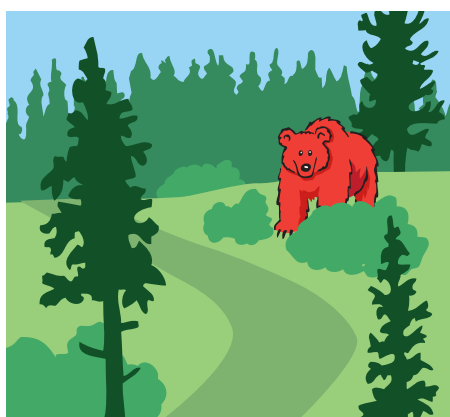


Did you remember your BEAR SPRAY?

Bears live and eat around here.



- ▶ If you see a bear and it hasn't seen you, assess whether it is far enough away that you can carry on without disturbing it. If you are unsure, go back the way you came.



- ▶ If you encounter a bear and it notices you: back away slowly, talk to the bear (*do not yell*) and let the bear know you are leaving.



- ▶ If a bear charges you, use your bear spray to deter it. Bear spray works best at very close range. It will not work farther than about 30 feet (some brands 15 feet). Read the instructions on the can and know what you are working with.



Please travel wisely in bear country.